

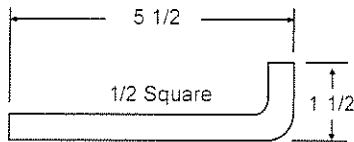
Catch Basin Traps

Campbell Foundry Company manufactures three types of Catch Basin Traps:

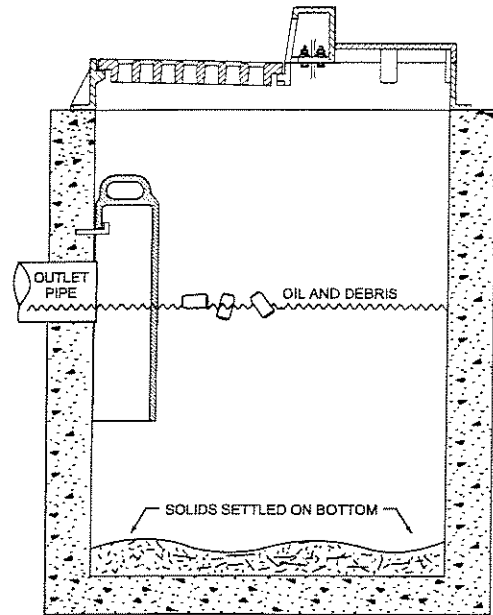
1. Standard Type
 - a. Cast Iron for pipe sizes to 21"
 - b. Fabricated Aluminum for pipe sizes 21" and over
2. Enclosed Type
3. Vapor Tight Type
4. The Snout, Oil, Water, Debris Separator (See page 27)

The Standard Catch Basin Trap is installed to prevent floating debris from entering and clogging the sewer line. The Trap also creates an effective water seal from sewer gases.

The Standard Catch Basin Trap consists of two component parts - the trap and the stainless steel hanger hooks (2).

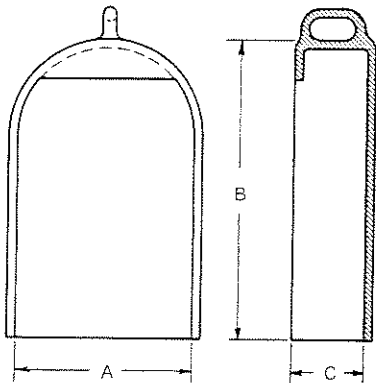


STAINLESS STEEL HANGER HOOKS



TYPICAL CATCH BASIN

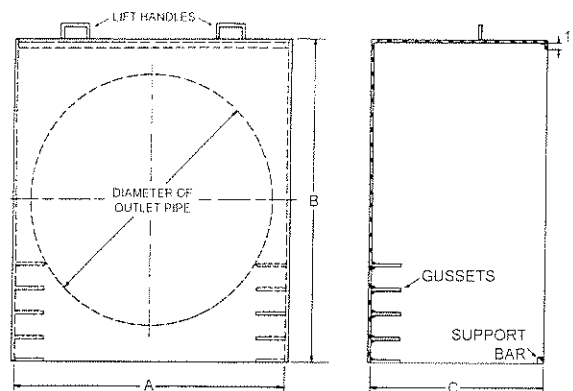
STANDARD TRAPS



CAST IRON TRAP

PATTERN NUMBER	DIMENSIONS IN INCHES			PIPE SIZE
	A	B	C	
2563	15 1/2	26	7 1/2	12
2564	18	27	9	15
2565	20	27	10	18

NOTE:
For pipe sizes under 12" use pattern number 2563.



FABRICATED ALUMINUM TRAP
(PIPE SIZES 21" TO 54")

PATTERN NUMBER	DIMENSIONS IN INCHES			PIPE SIZE
	A	B	C	
2569 0214	27	33	12	21
2569 0244	30	36	15	24
2569 0274	33	39	18	27
2569 0304	36	42	20	30
2569 0364	42	48	25	36
2569 0424	48	54	29	42
2569 0484	54	60	34	48
2569 0544	60	66	38	54

Material - 1/8" Aluminum plate .

1/4" Galvanized Fabricated Steel Plate for 48" & 54" sizes.

All Standard Traps supplied with 1/2" x 1/2" x 6" stainless steel hooks.

Wall plates furnished upon request.

Please contact our office for availability of ELLIPTICAL pipe size traps.

